

AN AGED METALLIC LOOK...WITHOUT THE WAIT

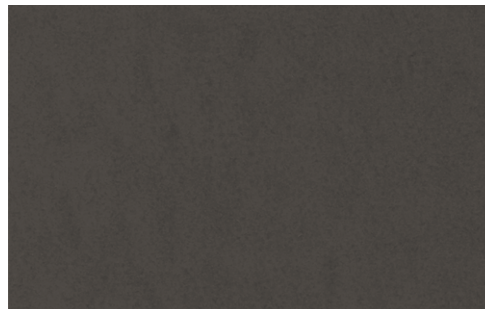
**Vintage®**

Vintage is an innovative prepainted metal product which provides warmth and character. A proprietary coating 'pre-ages' Steelscape's TruZinc® metallic coated steel surface producing a beautiful and durable finish that is also graffiti resistant.

The combination of pigmentation and gloss is what gives our Vintage coated metal a dynamic and aged appearance and has become a top choice for architects and designers. Vintage coated metal is ideal for roofing and siding applications, as well as unique interior applications.

**Achieve your design vision with
the durability and affordability of steel.**

Vintage is produced in G90 metallic coating weight and comes with a limited warranty.

**Vintage®**

Representation of color may vary due to printing limitations.
Note: Natural variation of color between production runs.

Steelscape is the market leader in high-quality metallic-coated and pre-painted steel.

Your business is our business... Steelscape is committed to offering its customers the best service in the industry, on-time delivery, and innovative solutions.

PERFORMANCE QUALITIES



Substrate: (ASTM D653)	G90 TruZinc® (HDG) Coated Steel
Finish:	Proprietary “aged” look using fluorocarbon prepaint technology
Surface Appearance:	Smooth and free of blistering and other surface imperfections
Film Thickness: (ASTM D5796)	Top System Finish: 0.55 - 0.65 mil Bottom System Finish: Primer = 0.15 - 0.25 mil Backer = 0.30 - 0.40 mil
Specular Gloss: (ASTM D523)	60 Degree Specular Gloss = 20% - 40%
Hardness: (ASTM D3363)	2H - 4H
Cure Test: (ASTM D5402)	100 Double MEK Rubs Minimum
Abrasion, Falling Sand: (ASTM D968)	65 - 85 liters/mil
Cross Hatch Adhesion: (ASTM D3359)	No Tape Off
Reverse Impact: (ASTM D2794)	No Tape Off, 80 inch-pounds of force
T-Bend Flexibility: (ASTM D4145)	2T No Tape Off
Humidity Resistance: (ASTM D2247)	1,000 Hours - Passes (100% RH @ 100 degrees F)
Salt Spray Resistance: (ASTM B117)	1,000 Hours - Passes (5% Salt Spray @ 95 degrees F)