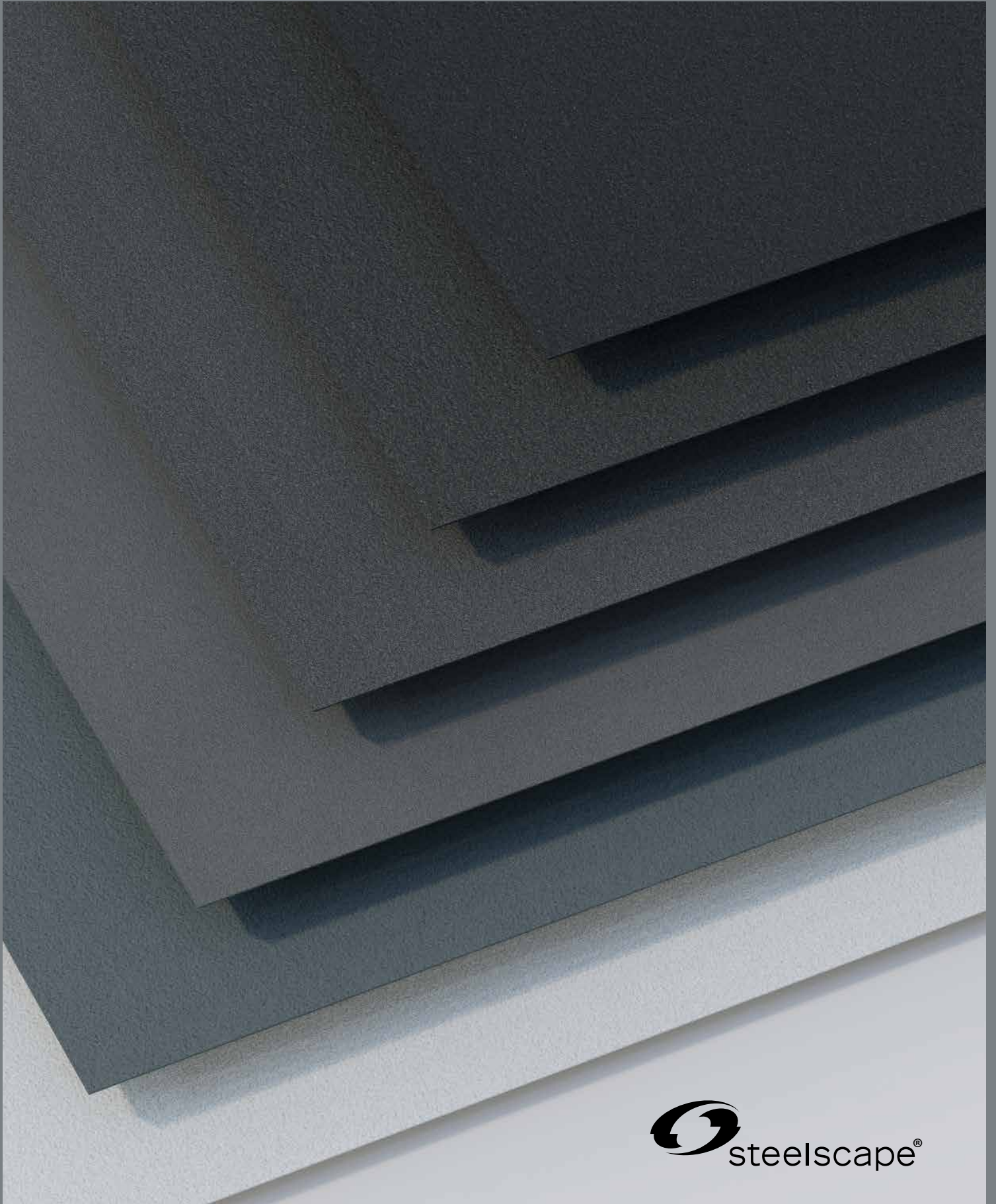


NATURAL MATTE®

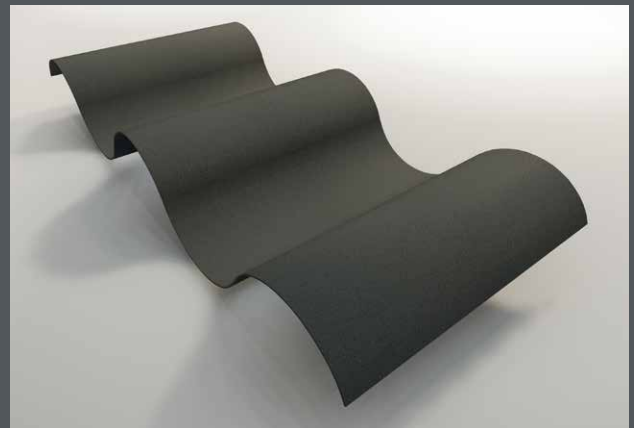




Natural Matte®

Subtle. Refined. Revolutionary.

Matte surfaces are all around us, from rugged coastal cliffs, to ancient volcanic mountains. These natural materials complement and enhance their surroundings through their balanced interaction with light. Capturing the diffuse light interaction of organic surfaces, Natural Matte® encompasses a range of six refined exterior finishes for metal roofing and siding.





BASALT

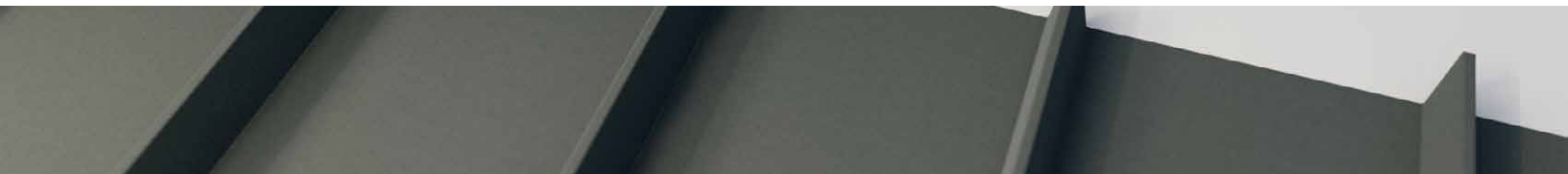
Depth and distinction in an everlasting hue.

An elegant hue with a modern twist, Basalt complements the textures and muted color palettes of surrounding natural elements.

Basalt promotes a deeper connection between the building's exterior and its surrounding environments through its captivating yet delicate hue.



BASALT
22824
SRI^A: 28
LRV: 14
GLOSS: 0.9
SHEEN: 2.1



GRAPHITE

Understated and contemporary to elevate design flexibility.

A richer, versatile gray, Graphite provides the flexibility to fulfill visions of any scale. Gray without being boring, Graphite elevates exterior surfaces through its even diffusion of light.

Graphite exudes elegance in almost any environmental setting allowing it to pair with both traditional and modern design elements including stone or wood shake siding.



GRAPHITE
22825
SRI^A: 29
LRV: 9
GLOSS: 1.1
SHEEN: 2.4



ORE

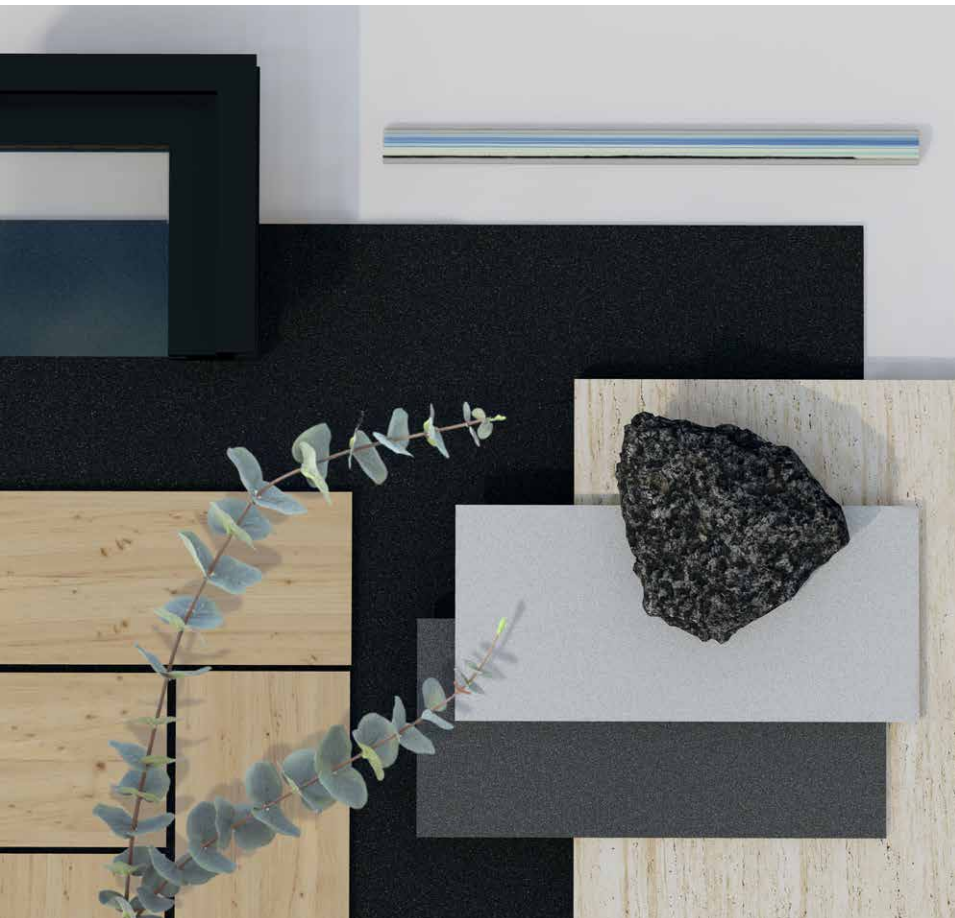
Rich and reserved with engaging warmth.

Balancing earthy tones without unwanted color saturation, Ore provides a complementary, balanced finish.

Ore's restrained earthy hue facilitates the accentuation of other natural materials such as wood and stone. This finish reinforces the creation of harmonious, naturalist, or nurturing color palettes.



ORE
22827
SRI^A: 28
LRV: 9
GLOSS: 1.1
SHEEN: 2.3



CARBON

An unprecedented, rich black.

Sleek and ageless, rich blacks form the cornerstone of modern building design. The delicate light interaction of Natural Matte, in concert with the depth of the Carbon, creates a commanding deep black in all lighting environments.

Carbon enhances the perceived depth of roof and wall surfaces. Developed to complement minimalist color palettes, single-color designs, or stark exterior contrasts.



CARBON
22826
SRI^A: 25
LRV: 5
GLOSS: 0.9
SHEEN: 3.8



Natural Matte®

Natural Matte® is the ultimate low-gloss metal finish to elevate building exteriors.

Natural Matte uses light-disruptive paint technology to create the new benchmark for refined matte metal finishes. Exclusive to Steelscape, Natural Matte eliminates unwanted shine and glare without sacrificing color depth or finish durability. Designed for roofing, siding, or other exterior accent pieces, Natural Matte offers design flexibility like never before.

Natural Matte®

Subtle. Refined. Revolutionary.

Matte surfaces are all around us, from rugged coastal cliffs, to ancient volcanic mountains. These natural materials complement and enhance their surroundings through their balanced interaction with light.

Capturing the diffuse light interaction of organic surfaces, **Natural Matte®** encompasses a range of six refined exterior finishes for metal roofing and siding.



THE DIFFERENCE IS IN THE NUMBERS

	Natural Matte® CARBON	Standard BLACK
GLOSS (60°)	0.9	21
SHEEN (85°)	3.8	25
LIGHT REFLECTANCE VALUE (LRV)	5	5

Natural Matte offers gloss and sheen values at groundbreaking low levels, without sacrificing color depth.

Gloss and sheen represent the visible shine observed from specific viewing angles. A common concern with metal, note how both these values are several times lower than the standard black color.

Natural Matte maintains robust color and this is evident in the LRV equal to the standard black. LRV denotes how dark or light a color will appear and is useful for grouping or comparing colors.

To learn more about Natural Matte visit steelscape.com/natural-matte



Style and Performance

Based on proven paint technology, Natural Matte offers a delicate satin texture, a 40-year finish warranty and a 30-year warranty against color fade. Combining a refined aesthetic with enduring performance, Natural Matte is the ideal finish for metal roof and siding products including standing seam roof panels and flush architectural wall profiles.

Request samples today at [Steelscape.com](https://www.steelscape.com)





SHALE

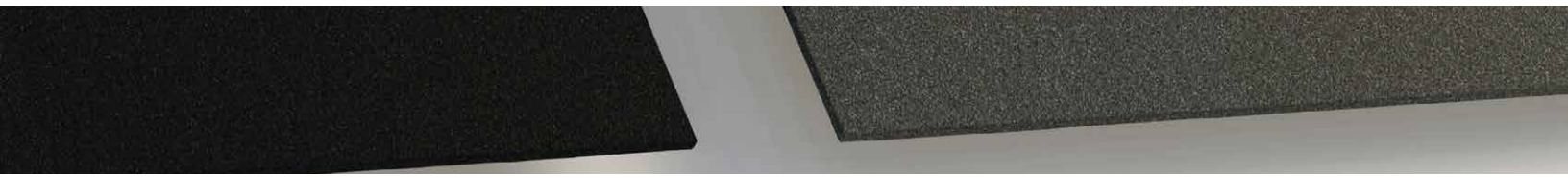
A timeless, balanced gray for all applications.

Neutral grays provide a versatile hue and a logical choice for a sustainable, enduring designs. The elegant color and even diffusion of light promotes subtlety and sophistication.

Developed to pair with other timeless features including monochromatic colors or rich natural wood accents. Shale's lighter color and restrained hue enables other bold colors to excel without clashing.



SHALE
22823
SRI^A: 44
LRV: 23
GLOSS: 1.1
SHEEN: 2.3

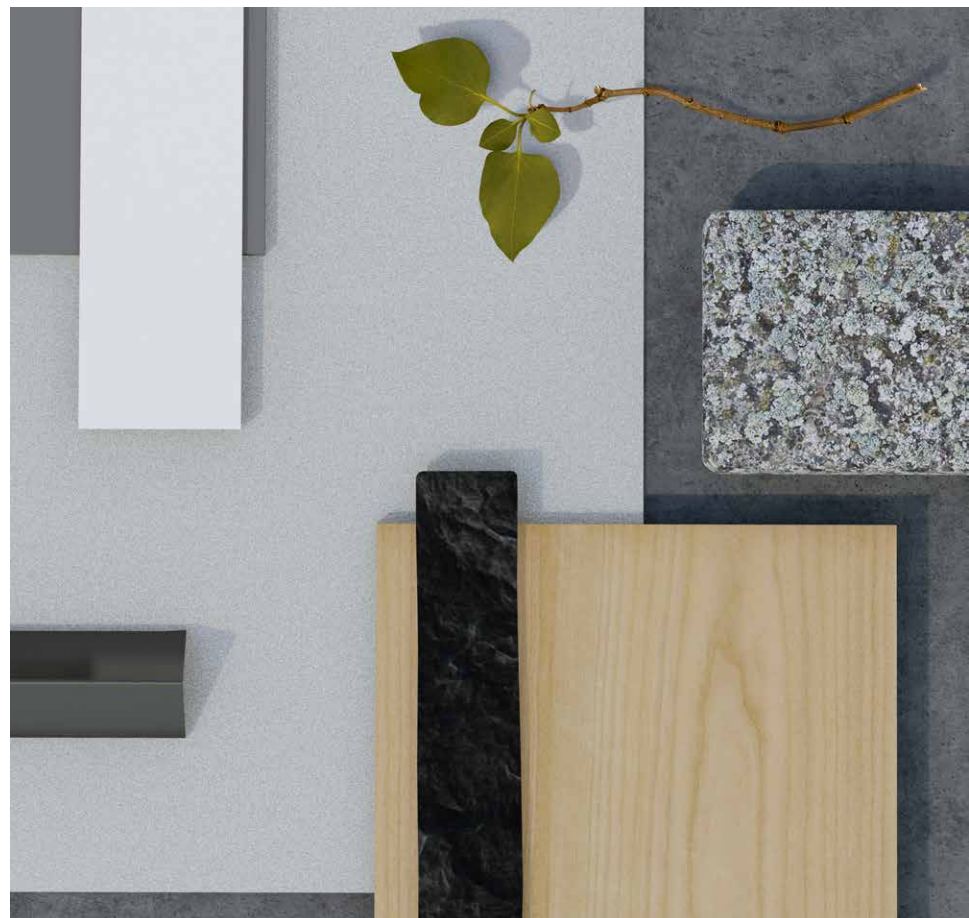


FROST

Crisp and pure, promoting simplicity and focus.

Harnessing the cleansing appeal of the first winter snow, Frost provides a clean yet purposeful finish.

Frost promotes the creation of welcoming, minimalist color palettes and facilitates harmonious color contrasts. Its crisp tone enhances the use of bold color accents.



FROST
22828
SRI^A: 87
LRV: 79
GLOSS: 1.9
SHEEN: 2.2



Product Details

Warranty	40-year film integrity, and 30-year color fade and chalking warranty
Paint System Type	Silicon Modified Polyester (SMP)
Standard Thickness	0.0140" - 0.0296"
Substrate	Metallic coated steel (TruZinc or ZINCALUME®)
Production Location	Kalama, Washington / Rancho Cucamonga, California

Application

Recommended Protective Strippable Film	Pregis 21UV71C
Batch Sensitive	Yes
Touch Up Paint	Available, please inquire for product information

For other product information, please see the separate 'Customer FAQ' document found in the Natural Matte resources.

△ Published initial and aged CRRC values available by request. These value may differ due to differences in testing requirements. See CRRC product directory listing for details.

