



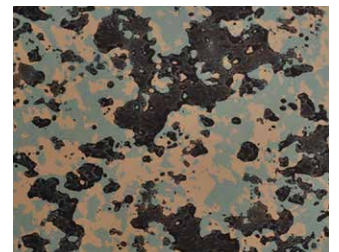
# CAMO Prints

Who would have thought that Steel could blend so effectively into a vegetative environment? Steelscape's CAMO series offer the ability to camouflage small structures without the need to add a third party finish or coating. This means that Steelscape's CAMO is ideal for hunting blinds, cabin or shed applications as a roof and wall product.

Unlike other camouflage products such as wraps or laminates, Steelscape's CAMO print won't fade and need replacement, and will hold up to extreme environmental conditions. Supported by a 25 year limited finish warranty, CAMO gives adventurers and sporting enthusiast's excellent performance and peace of mind.



**Marshland CAMO**  
SRI 53 • XGRAMC02



**Woodland CAMO**  
SRI 30 • XGRAWC02

Representation of color may vary due to printing limitations.  
Actual metal samples are available upon request.

Due to the unique nature of this product, color may vary slightly from batch to batch. Batches should not be mixed on projects.