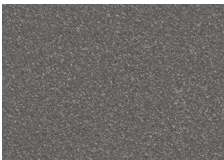
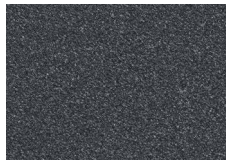




Product testing photo demonstrating mixed adhesion results for different strippable films



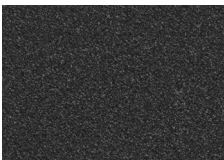
**Shale**  
22823



**Basalt**  
22824



**Graphite**  
22825



**Carbon**  
22826



**Ore**  
22827



**Frost**  
22828

**Overview:**

The Natural Matte product range features six contemporary solid colors with extremely low levels of gloss and sheen. This product family provides a response to increasing demand for versatile, low-gloss color options. This product differs to traditional painted low gloss products in that the finish is achieved through advanced paint chemistry as opposed to the addition of particulates or flattening agents. This finish produces a subtle, satin style surface texture.

Like many pre-painted metal finishes, Natural Matte can be susceptible to scratching and marring when handled aggressively during the transportation or installation process. Roll formers and product manufacturers using Natural Matte

may seek to provide additional protection for their customers by using a factory applied strippable film – an adhesive protective barrier applied during the forming process and removed once installed.

**Consideration:**

Through its product development process, Steelscape has identified that the unique surface texture of Natural Matte can result in the premature loss of strippable film adhesion. While the initial application of many factory-applied films may appear satisfactory, Steelscape has identified that adhesion can deteriorate rapidly. This may result in strippable film adhesion loss prior to product handling, transportation, or installation.

**Solution:**

The Pregis 21UV71C strippable film is a suitable solution for Natural Matte.

Steelscape is continually researching appropriate strippable film solutions for all its products, and the list of recommended products may expand.

Moisture, direct sunlight, extreme temperature changes, and other environmental factors can influence strippable film adhesion. Steelscape recommends that strippable film exposure to these factors be limited where possible.

**Contact:**

For inquiries or assistance identifying a suitable provider of strippable film, please contact (888) 553-5521, or submit a request via Ask Steelscape.