

# PROJECT SPOTLIGHT CATALOG



steelscape

# CONTENTS

Steelscape's portfolio of project spotlights offers you the chance to see our finishes on real world projects.

Please browse the projects below for design and color inspiration. Please reach out to us if you have questions or request a free samples at [Steelscape.com](https://www.steelscape.com)

## **3 Vintage®**

- 4 Hanger Home
- 5 Highland Middle School
- 6 Goodhaus
- 7 Orchard Mesa Middle School
- 8 Mother Neff State Park
- 9 Broadcast Apartments
- 10 Self Storage and Mixed Use
- 11 Washington High School STEM
- 12 Briarwood Elementary School
- 13 North Gresham Elementary

## **14 Vintage® Heritage**

- 15 Commercial Building

## **16 Eternal Collection®**

- 17 Kalama Reroof
- 18 Shelton Family YMCA

## **19 Woodgrain**

- 20 Matte Barnwood Farmhouse

## **21 Aged Metallics**

- 22 Oceanside High School Performing Arts Center

## **23 Rawhide**

- 24 Coyote House

## **25 Rustic Rawhide®**

- 26 Rustic Rawhide Residential Home

## **27 Rustic**

- 28 Shoreline Fire Station 63
- 29 Thunder Vista P-8 School
- 30 Firestone Vineyard
- 31 Central Pierce Fire Station 63
- 32 Sky Ranch Middle School
- 33 Spruce Elementary
- 34 Port of Kalama Interpretive Center

## **35 Solid Colors**

- 36 Skokomish Community Center
- 37 McMenamins Kalama Harbor Lodge
- 38 410 Urban Landfill
- 39 Elk Grove Animal Shelter
- 40 "Black Magic" Private Residence

## **41 Natural Matte®**

- 42 Sustainable Practices
- 43 Concora Architect Center



# Vintage®

## A Dynamic Metal Roofing and Siding Color

Vintage® offers a warm, classic-aged metal appearance, designed to maximize the natural light cast on your metal roofing and siding.

Its semi-translucent color allows for the character of the underneath metal to be visible, providing unparalleled depth and a distinct metallic sheen. The dynamic nature of this finish plays on the changing light of its environment.



Vintage

SRI 22 | 14102





## PROJECT SPOTLIGHT:

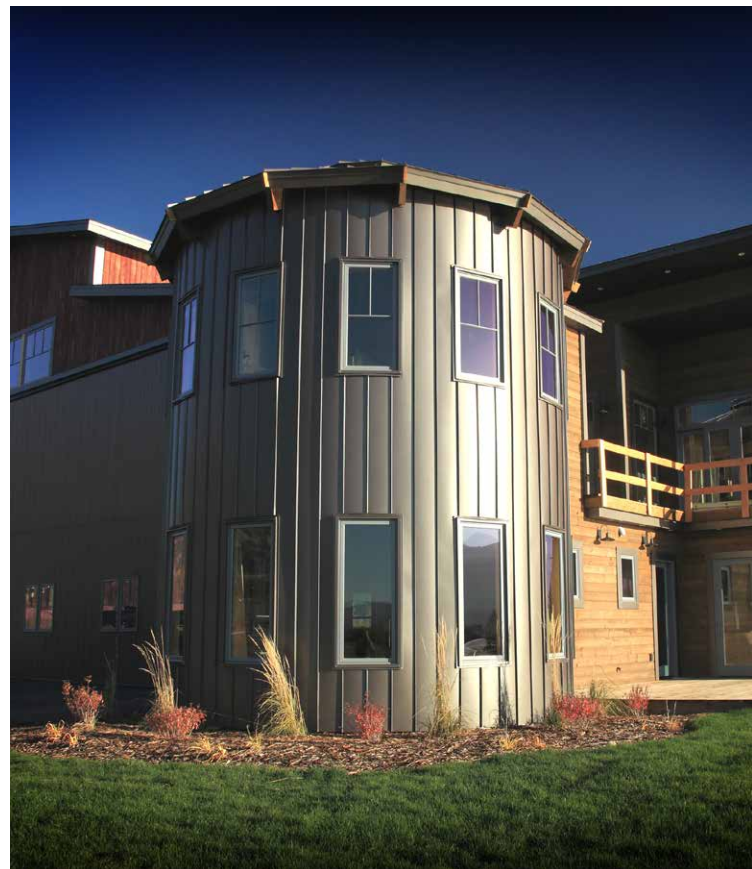
# HANGAR HOME

ALPINE, WY

This home sits on the expansive Refuge Air Ranch, a unique 65 acre, 25 lot community with 6,000 Ft of runway. The home integrates an airplane hangar and a comfortable living quarters, and uses a diverse range of materials to integrate the structure into its mountain setting. Recreating the appeal of an old farmhouse, Steelscape's Vintage® is featured in a silo focal point of the design. The dynamic finish and warm color of Vintage provide an intriguing accent piece in this unique design. Vintage is further used as a contrasting trim and hangar door color.

**Architect:** Timberline Associates

**For samples or more information on Steelscape's Vintage® visit [Steelscape.com/vintage](https://steelscape.com/vintage)**







## PROJECT SPOTLIGHT:

# HIGHLAND MIDDLE SCHOOL

MEAD, WA

This 120,000 square foot, 850 student school sits within the Five Mile Prairie region of Spokane Washington. The design features smaller learning communities for each grade to improve safety, to enhance a sense of community, and to ease student progression from elementary to middle school.

The exterior façade features Steelscape's Vintage finish in conjunction with AEP Span's Flex Series® metal siding. The combination of the engaging, varied vertical panel shapes, and dynamic color of Vintage, produce siding accents and shadows that evolve throughout the day. The modern yet restrained hue of Vintage integrate with the light brick perimeter and the open, natural setting of the school. Metal siding was a conscious project decision to maximize the life span of the building while reducing operational costs. Vintage's inherent graffiti resistance aided in the color selection decision, making its use for a school a great fit!

**Architect:** ALSC Architects

**Installer:** Graham Construction

**Photo Credit:** Alan Brandt Photography

**For samples or more information on Steelscape's Vintage® visit [Steelscape.com/vintage](https://steelscape.com/vintage)**





## PROJECT SPOTLIGHT:

### GOODHAUS

NEVADA CITY, CA

Completed in 2018, Goodhaus is a Zero Net Energy home designed by and built for the principals of Atmosphere Design Build. Selected as Fine Homebuilding's House 2018, this 2,300 sq ft family home embodies the designer's passions of resiliency, efficiency, health and comfort, beauty and playfulness.

Steelscape's Vintage® was used to achieve the design vision of 'handmade modern' and to complement the extensive use of natural cedar siding. Vintages dynamic hue contributes to the integration of the structure with the dense, natural environment of the surrounding Sierra foothills.

**Architect:** Atmosphere Design Build

**Photo Credit:** Kat Alves Photography

**For more information on this color, visit [steelscape.com/vintage](https://steelscape.com/vintage)**







## PROJECT SPOTLIGHT:

### ORCHARD MESA MIDDLE SCHOOL (OMMS)

GRAND JUNCTION, CO

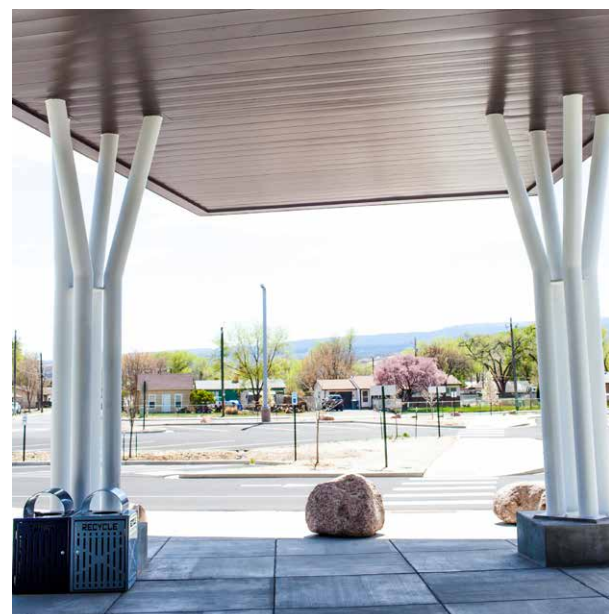
This project had a simple design mission to create an ‘awe-inspiring’ area where both students and staff were excited to visit each day. At almost 100,000 square feet in size, this modern, visually striking school has achieved this vision.

Steelscape’s dynamic Vintage® finish was selected as the preferred material for the metal façade as its unique interaction with light contributed to the layered design of the structure. The combination of the upper varied wall panel design, in conjunction with a lower multi-tone brick façade, contributes to an engaging sense of texture.

Vintage’s versatile hue enables the expansive building to integrate into its high-desert environment, and metal’s outstanding durability provides peace of mind for the school district for decades to come.

**Architect:** Blythe Group + Co.

**For samples or more information on Steelscape’s Vintage® visit [Steelscape.com/vintage](https://steelscape.com/vintage)**







## PROJECT SPOTLIGHT:

### MOTHER NEFF STATE PARK

MOODY, TX

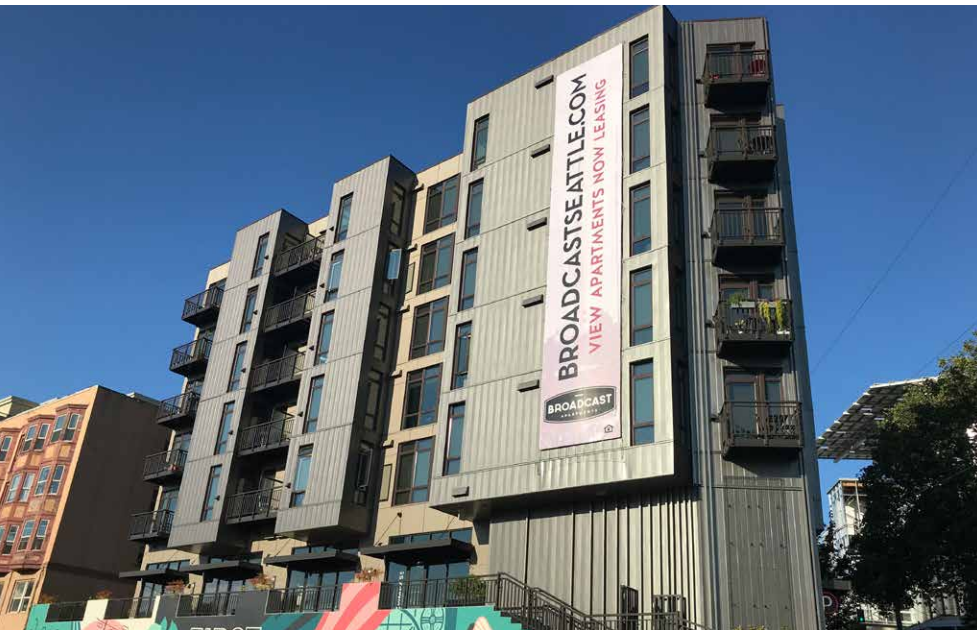
This new, limestone visitor center formed the centerpiece of the re-opening of Mother Neff State park following extensive upgrades in 2015. The design team chose the classic color and depth of Steelscape's Vintage® to complement the mixed metal and stone facade. Designed to match existing historic structures within Texas' oldest state park, Vintage's ageless hue integrates the clean lines of modern roofing design with the unique texture of authentic stone.

**Roofer:** Port Enterprises and Roofcrafters

**For more information on Steelscape's Vintage® visit**  
[Steelscape.com/vintage](https://steelscape.com/vintage)



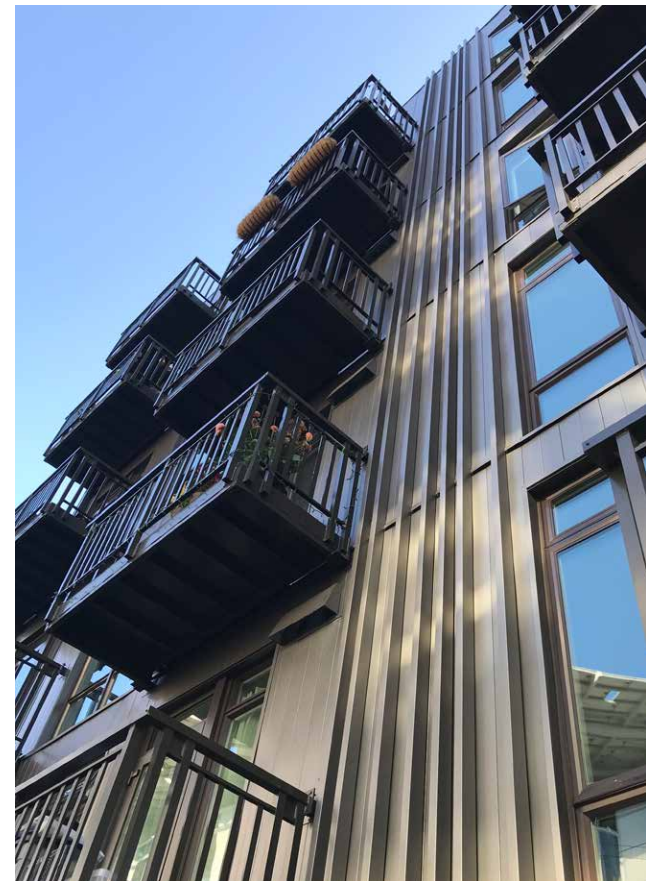




## PROJECT SPOTLIGHT:

# BROADCAST APARTMENTS

SEATTLE, WA

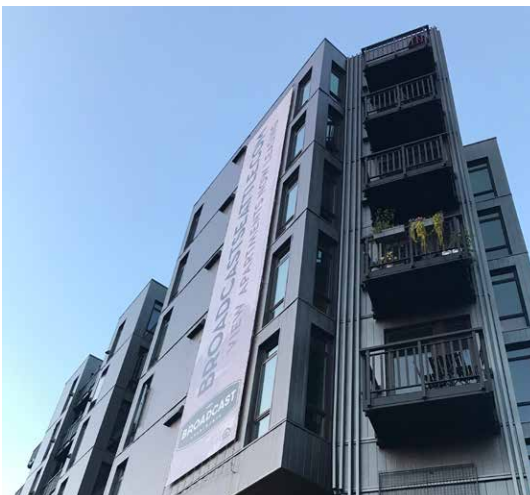


The Broadcast Apartment complex stands out from its surroundings through the extensive use of Steelscape's Vintage metal finish. Featuring 70 residential units and 4 live-work units, the complex features a variety of different wall panel forms to add texture and character to the flat surfaces of the structure. The timeless warmth of Vintage® provides a distinctive, evolving appearance that engages with natural light in a compelling way. Finished in 2017, the structure features a collection of different spaces incorporating apartments, retail space, rooftop entertainment options, and underground parking.

**Architect:** Johnson Oakleaf Architecture and Planning

**Builder:** Trent Development

**For more information on Steelscape's Vintage® visit [Steelscape.com/vintage](https://steelscape.com/vintage)**







## PROJECT SPOTLIGHT:

### Self-Storage and Mixed Use

SACRAMENTO, CA

At the intersection of two freeways sits this distinctive mixed-use development. Designed to capture the attention of passing motorists, the structure includes a state-of-the-art self-storage facility, residential lofts, and street-facing retail stores. The design features a broad material palette of brick, concrete, and metal siding and contributes to the continued revitalization of the west-end Broadway area.

The design features Steelscape's Vintage® finish, used in conjunction with AEP Span's NuWave® Corrugated profile. This color subtly contrasts the different layered materials used in the structure while still promoting the historical roots of this area. The texture of the corrugated profile enhances visual appeal, despite the design's functional need to be boxy and utilitarian.

**Architect:** Vrilakas | Groen

**Siding Product:** AEP Span 24-gauge Nu Wave® Corrugated

**Installer:** Rua and Son Mechanical

**Finish:** Steelscape's Vintage®

**For more information on Steelscape's Design and Color Solutions, visit [steelscape.com](https://steelscape.com)**







Photo credit: Amos Shriver, Shutter Release Photography

## PROJECT SPOTLIGHT:

# WASHINGTON HIGH SCHOOL STEM

### TACOMA, WA

This STEM academy delivers an inspiring environment for hands on learning in science and technology. Consisting of the renovation of two existing buildings and the addition of a new structure, the facility provides the benchmark for the school district's labs and classrooms.

Steelscape's Vintage® was used in conjunction with a box-ribbed metal wall panel to add texture and complementary shadow lines to this modern structure. Vintage's classic metallic hue interacts dynamically with natural light and blends exceptionally well with the mixed use of wood and masonry siding products.

**Architect:** Erickson McGovern

**Builder:** Architectural Sheet Metal

**For more information on this color, visit [steelscape.com/vintage](https://steelscape.com/vintage)**







## PROJECT SPOTLIGHT:

### BRIARWOOD ELEMENTARY SCHOOL

RENTON, WA

This 2-story, 28-classroom school replaces the original 1963 building to bring elementary school education into the 21st century. The design emphasizes natural lighting and ventilation to improve the learning environment while reducing energy consumption.

The building extensively features metal siding and roofing, a desirable choice when durability and low operating costs are important considerations. The roofing and siding surfaces feature Steelscape's versatile yet dynamic Vintage® color, which accentuates the shapes and shows of the building.

**Architect:** Cornerstone Architectural Group

**Contractor:** Babbitt Neuman Construction Company

**For samples or more information on these colors, visit [steelscape.com](http://steelscape.com)**







## PROJECT SPOTLIGHT: NORTH GRESHAM ELEMENTARY SCHOOL GRESHAM, OR

This collaboratively developed school instills pride among teachers and students with its commanding yet memorable design. The design focuses on dynamic circulation, which creates student gathering spaces and provides students with a variety of pathways, both physically and academically.

The façade extensively features Steelscape's Vintage® finish on a box ribbed panel. The classic aged appearance of Vintage works in concert with other siding panels to add texture, and to contrast the rich red brick siding elements. The Vintage finish further helps this design endure the test of time with its standard anti-graffiti finish.

**Architect:** BBT Architects

**Installer:** Skyline Sheet Metal

**For samples or more information on Steelscape's Vintage® visit [Steelscape.com/vintage](https://steelscape.com/vintage)**





# Vintage® Heritage

## A Unique Metal Roofing & Siding Color

Vintage Heritage expands upon the timeless aesthetics of Steelscape's original Vintage® finish by adding additional depth and enhanced character.

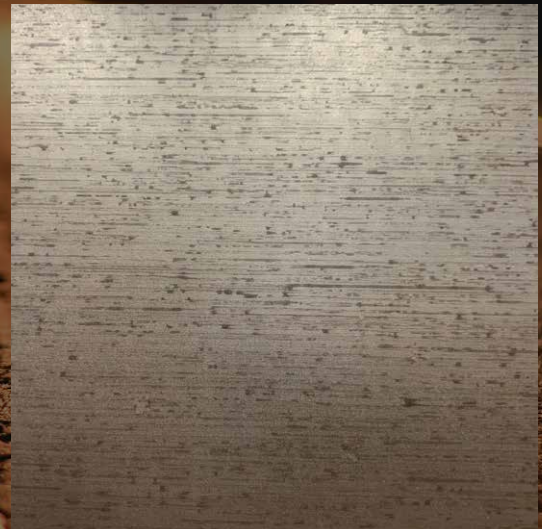
Our Legacy and Evolution prints provide intensity to the changing light of your structure's environment, allowing for a dramatic, yet classic look.

Both are designed to enhance immediate surface engagement while providing a classic aged metal appearance from afar. Vintage Heritage is perfect for your next metal roofing or siding project.



Legacy

SRI 20 | VSPGLG40



Evolution

SRI 22 | VSPGEV40





## PROJECT SPOTLIGHT:

### COMMERCIAL BUILDING

BOZEMAN, MT

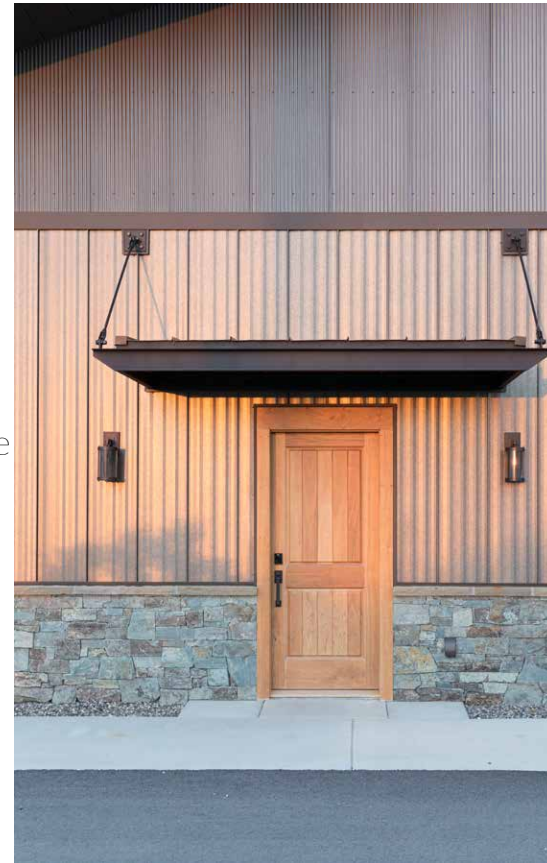
16" standing seam and ¼" corrugated metal siding with Steelscape's Vintage® Heritage finish feature on this commercial building in Montana. This product combination provides a clean look and transforms the visual appeal of this utilitarian building design. Vintage Heritage offers unique visual appeal through its warm yet distinctive finish, versatile color, and dynamic light interaction.

The customer for this project had previously used Steelscape's Vintage® in other exterior siding applications. They were excited by the enhanced visual distinction and added depth that Vintage Heritage offers and were eager to install one of the first applications of the product. The result looks fantastic, and the customer was thrilled with the transformational impact on the building.

**Product:** 16" Nailstrip (Standing Seam), and ¼" Corrugated

**Finish:** Vintage® Heritage Legacy

**Product manufacturer and photo credit:** Great Northern Metal Company



For more information on Steelscape's Design and Color Solutions, visit [steelscape.com](https://steelscape.com)

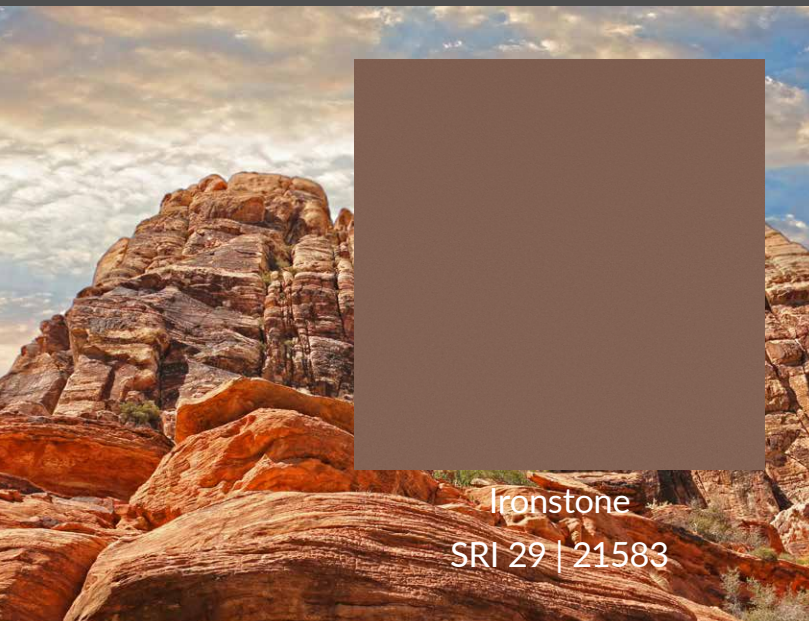


# Eternal Collection®

## Stunning Metal Roofing and Siding Colors

The Eternal Collection encompasses four inspiring colors, all employing the latest in paint technology. Their translucent finishes provide a distinctive surface sheen, depth, and rich color.

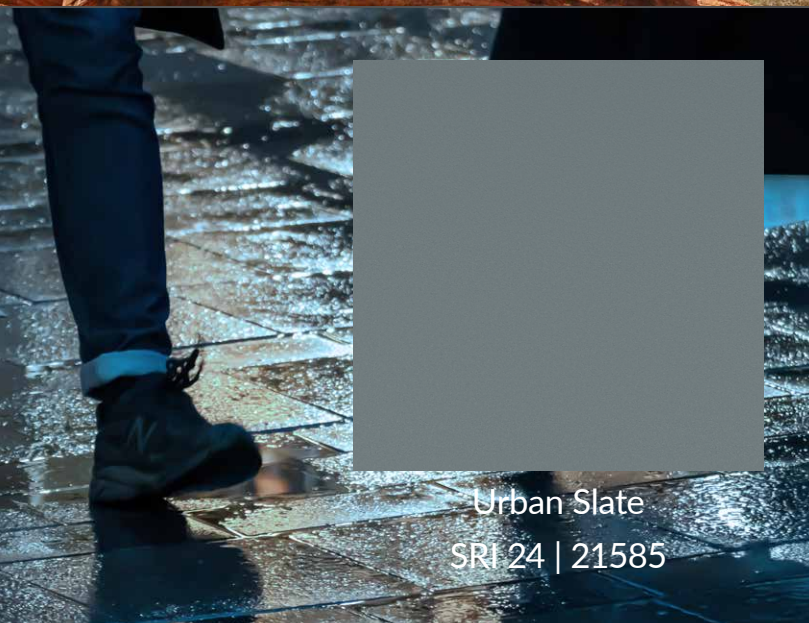
This collection blends exceptionally well with both urban and rural environments, as well as other building materials. Ideal for concealed fastener wall panels, insulated metal panels, standing seam roofing, and other metal accents.



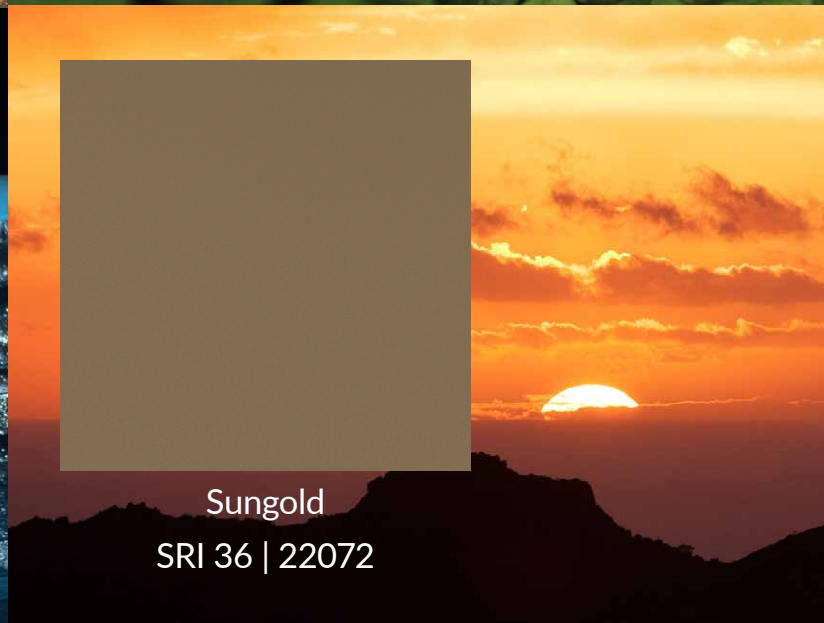
Ironstone  
SRI 29 | 21583



Rainforest  
SRI 25 | 21584



Urban Slate  
SRI 24 | 21585



Sungold  
SRI 36 | 22072





## PROJECT SPOTLIGHT:

### KALAMA HOME REROOF

KALAMA, WA

A Washington State homeowner selected Steelscape's Eternal Collection® Urban Slate to uplift the style of their home with a stunning new roof. Built in 1993, this home featured an original teal roof with outdated, inferior paint technology.

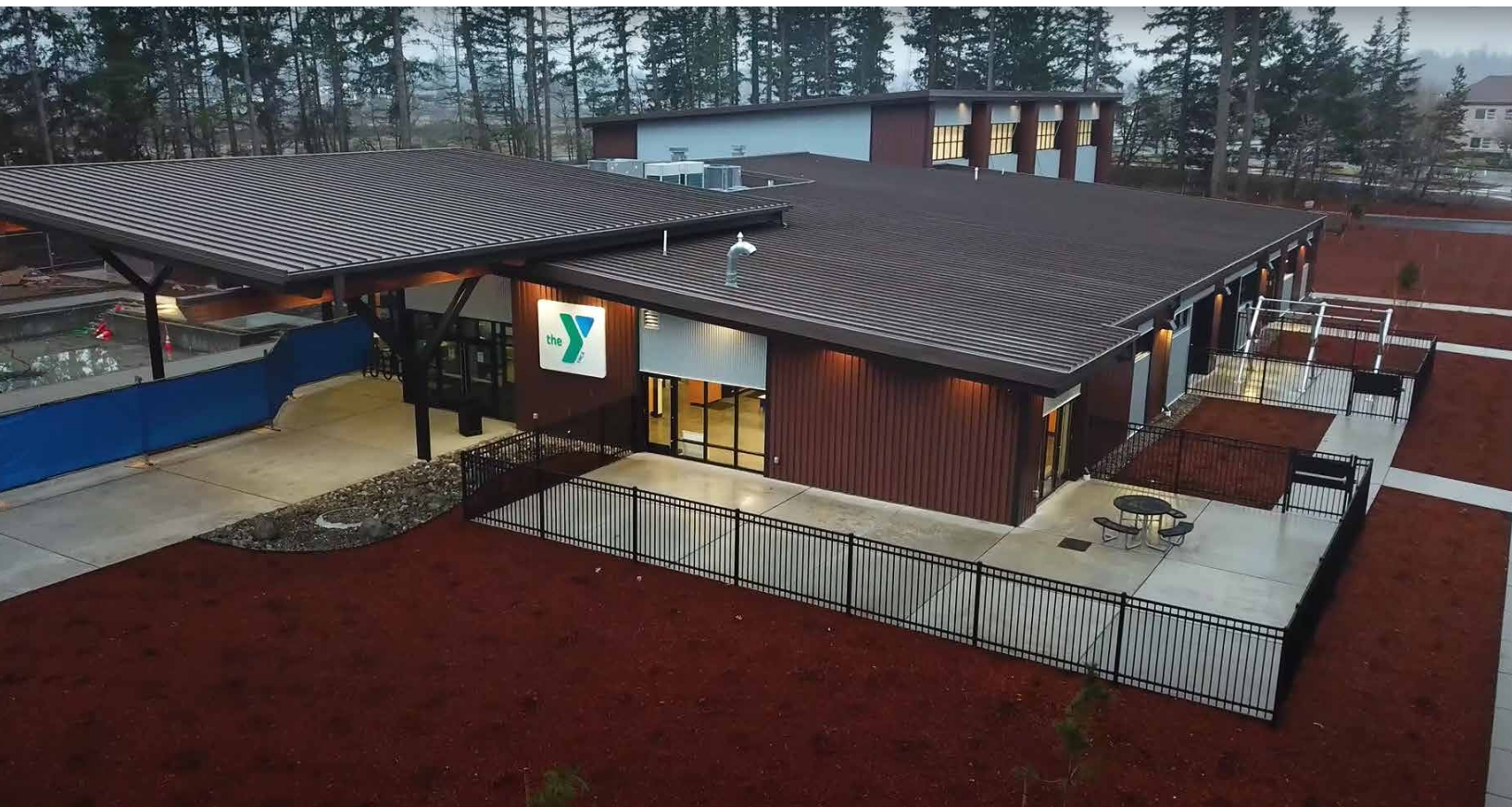
The striking new roof features Steelscape's Urban Slate on a classic standing seam profile. Urban Slate is a semi translucent finish which provides a deeper color that changes dynamically with daylight. This engaging color in conjunction with the clean, crisp lines of the standing seam profile uplift the curb appeal of this home and improve the integration of the home with its lush environment.

**Roofing Profile:** AEP Span's Design Span® *hp*  
**Installer:** Cogent Construction, Shelton WA

For more information on Steelscape's Eternal Collection visit [www.steelscape.com/eternal-collection](http://www.steelscape.com/eternal-collection)







## PROJECT SPOTLIGHT: SHELTON FAMILY YMCA

### SHELTON, WA

Located in the South Basin of the Puget Sound resides this vibrant, state-of-the-art, healthy living facility. Run as a nonprofit organization, the YMCA is dedicated to strengthening the local community through youth development, healthy living, and social responsibility.

The spacious facility includes pools, gyms, sports courts, and educational areas and an engaging façade featuring Steelscape's Eternal Collection® Ironstone finish. With its unique depth and dynamic light interaction, Ironstone provides a warm, contemporary color that complements wood and concrete materials and contrasts other metal elements. Its robust FEVE coating is a building manager's dream, with outstanding durability, graffiti resistance, and low long-term maintenance requirements.

**Architect:** Williams Architecture

**Installer:** BahnMiller Construction, Inc

**For samples or more information on Steelscape's Eternal Collection® visit [Steelscape.com/eternal-collection](https://steelscape.com/eternal-collection)**





# Woodgrain

## Metal Siding Authentic Wood Finish

Steelscape's Woodgrain prints offer the warmth and natural beauty of wood combined with the durability of metal. Compared to wood, metal is fire resistant, rot resistant, termite resistant, and easier to maintain.

Featuring an authentic blended finish for optimum realism, Steelscape's Woodgrain is ideal for siding applications, including board and batten siding, wall accents, and metal log cabins.



Red Cedar  
SRI 37 | XWOORC01



Matte Barnwood  
SRI 38 | XWOORC21



Matte Red Cedar  
SRI 26 | XWOOBG20





## PROJECT SPOTLIGHT:

### Matte Barnwood Farmhouse

STANLEY, WI

Nestled in the lush countryside of rural Wisconsin sits this new farmhouse structure featuring Steelscape's Matte Barnwood finish in a board and batten siding profile.

The detailed pattern and shine-free paint produce an authentic wood effect. The versatile Matte Barnwood color pairs well with the black trim while integrating with the rural setting. Unlike traditional aged or distressed wood, this painted metal siding will not rot or decay or require ongoing maintenance. This durable metal siding will continue to look great for many years to come despite the punishment of the extreme Midwest winters.

**Siding and Installation:** Hixwood Metal

**Finish:** Steelscape's Matte Barnwood

**For more information on Steelscape's Design and Color Solutions, visit [steelscape.com](https://steelscape.com)**





# Aged Metallics

## Patina Metal Roofing & Siding

Steelscape's Woodgrain prints offer the warmth and natural beauty of wood combined with the durability of metal. Compared to wood, metal is fire resistant, rot resistant, termite resistant, and easier to maintain.

Featuring an authentic blended finish for optimum realism, Steelscape's Woodgrain is ideal for siding applications, including board and batten siding, wall accents, and metal log cabins.



Antique Copper  
SRI 35 | XGRAAP01

Natural Antique Copper  
SRI 37 | XNATAC40

Rustic Copper  
SRI 35 | XGRARC01

Weathered Zinc  
SRI 47 | XGRAWZ01





## PROJECT SPOTLIGHT:

# OCEANSIDE HIGH SCHOOL PERFORMING ARTS CENTER

OCEANSIDE, CA

This 29,000 square foot performing arts hub was designed to set the bar for modern student resources. This expansive facility includes a 500-seat performance theatre, a 100-seat black box theatre, classrooms and more.

Winner of the 2018 42nd Annual Orchids & Onions Architectural Award, the charming patina of Steelscape's Natural Antique Copper was chosen to provide a distinctive gleaming beacon for the school. This color selection also served to enhance integration with the broader pastel hues of this sun-kissed region.

**Architect:** Harley Ellis Devereaux

**For more information on this color, visit [steelscape.com/aged-metallics](https://steelscape.com/aged-metallics)**



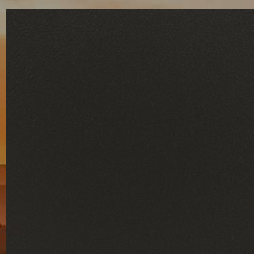


# Rawhide

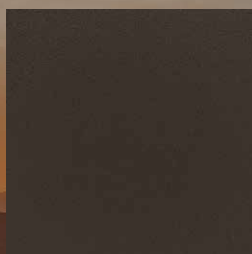
## Textured Metal Roofing & Siding Colors

Steelscape's Rawhide encompasses a range of textured colors that offer added depth and a less reflective finish. The versatile color palette and appealing texture ensure that Rawhide can be used in a broad range of applications.

This includes commercial siding, standing seam residential roofing, or corrugated wainscoting applications. The glare reducing properties of Rawhide are best deployed on flat surfaces making it ideal for wall applications such as concealed fastened siding products or wide pan standing seam roofing.



Coal Black  
SRI 24 | 17513



Dark Walnut  
SRI 24 | 17464



Burnished Slate  
SRI 28 | 18043



Ash Gray  
SRI 31 | 17878



Hartford  
SRI 23 | 20532



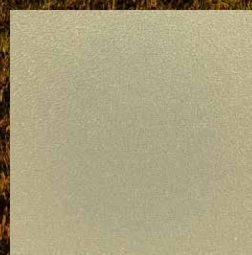
Steel Gray  
SRI 26 | 19914



Apache  
SRI 27 | 17882



Slate Gray  
SRI 42 | 20531



Hickory  
SRI 49 | 20533





## PROJECT SPOTLIGHT:

### COYOTE HOUSE

RED LODGE, MT

This homeowner selected a classic standing seam roof in Steelscape's Hartford Rawhide color to add performance and beauty to their log home. The crisp lines of the standing seam roof, the classic color, and natural texture of the log siding work together to create a welcoming home. The vivid green color complements the deep green hues of the surrounding area and a tasteful contrast to the natural log siding. The textured finish of the Rawhide color adds additional sensory appeal while reducing glare. This improves the homes integration into its lush, natural setting.

**For samples or more information on Steelscape's Rawhide visit [Steelscape.com/rawhide](https://steelscape.com/rawhide)**





# Rustic Rawhide®

## Weathered Metal Roofing & Siding Color

Rustic Rawhide pairs warm colors and stimulating texture to provide an unparalleled weathered metal finish.

Rustic Rawhide is a highly versatile color that blends exceptionally well with a variety of different architectural styles and panel types including residential standing seam metal roofing and corrugated metal roofing and siding.



Rustic Rawhide  
SRI 32 | XRAWNR01





## PROJECT SPOTLIGHT:

### RESIDENTIAL HOME

SNOWMASS, CO

Surrounded by the towering peaks of the Rockies sits this inviting residential home near Aspen Colorado. The home features uninterrupted panoramic views and a steep gabled roof recently replaced with Steelscape's Rustic Rawhide.

The homeowners needed to replace their existing cedar shake roof with a durable system that would provide a Class A Fire Rating. When used in conjunction with the correct underlayment, Metal provides an excellent, high-performance solution that will last for decades. The homeowners had already decided on a standing seam metal roof but were undecided on color. When shown Rustic Rawhide samples they loved it right away. Rustic Rawhide offers a restrained color that complements the design features of the home with a texture that reduces the sheen of the large roof area.

With both visual appeal and outstanding performance, the home now features a roof as memorable as the views around it.

**Roofer:** Rich Acerra, Aspen Roofing Contractors  
[aspenroof.net](http://aspenroof.net)



**For samples or more information on Steelscape's Rustic Rawhide® visit [Steelscape.com/rustic-rawhide](http://Steelscape.com/rustic-rawhide)**





# Rustic

## Rusted Metal Roofing & Siding Colors

Naturally rusted metals offer charm and a nostalgic feel but come at the cost of performance and durability. Steelscape's Rustics capture the natural beauty of oxidized metal while offering finish warranties of up to 30 years.

From the fresh oxidized glow of Sedona Rust to the aged tone of Natural Rust, Steelscape has an authentic finish for all applications.

The Rustic color palette is suited to a broad range of environments and designed to complement other natural elements such as wood siding and stone. Rustic prints are the ideal color for standing seam roofing, corrugated panels, and flat metal siding.



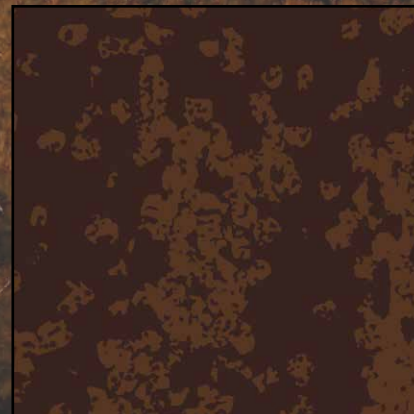
Baltic Brown  
SRI 29 | XGRABB01



Burnt Rust  
SRI 36 | XGRABI01



Sedona Rust  
SRI 31 | XPEBSR01



Natural Rust  
SRI 33 | XNATNR01





## PROJECT SPOTLIGHT:

### FIRE STATION 63

SHORELINE, WA

Having served the local area since 1939, this Washington based fire department required an upgrade to reflect the growing needs of the community. This brand-new firehouse incorporates a range of mixed materials to deliver a stunning, modern design.

Steelscape's Burnt Rust, featured in a corrugated wall panel was selected to provide warmth and texture to this commanding community building. Burnt Rust offers an oxidized color with an authentic weathered look without the performance compromise. This versatile color both contrasts and complements the gray and neutral tones of other stone and metal siding materials.

**Architect:** TCA Architecture Planning

**Contractor:** Shreve Construction LLC

**For more information on Steelscape's Burnt Rust visit [Steelscape.com/rustic](https://steelscape.com/rustic)**







## PROJECT SPOTLIGHT:

# THUNDER VISTA P-8 SCHOOL

BROOMFIELD, CO

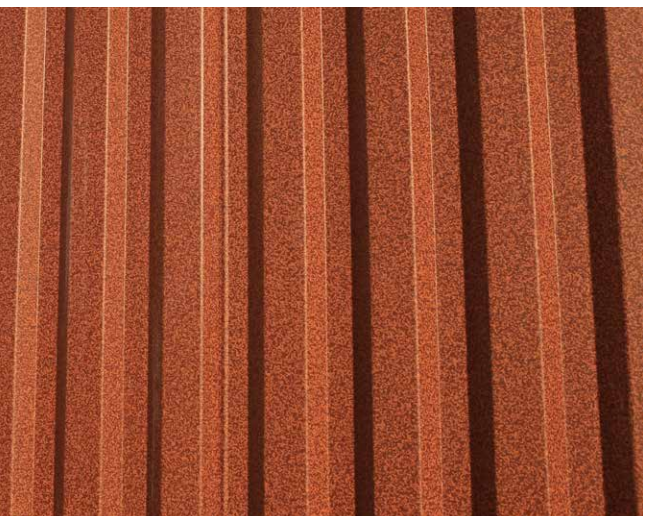


Serving up to 1,000 students, this 142,000 square-foot school provides a robust environment for students to learn and grow. Seeking to integrate with the golden colors of the surrounding mountain region, the design team used a corrugated wall profile in conjunction with Steelscape's Sedona Rust. This printed rust pattern was used rather than using a true weathered product, which would continue to deteriorate in performance-alleviating the headache of ongoing maintenance by school administrators. Sedona Rust provides the same warm, oxidized glow but is supported by the peace of mind of a complete paint warranty.

**Architect:** Hord Coplan Macht

**Builder:** Adolfson & Peterson Construction (AP)

**For more information on Steelscape's Rustic design options, visit [steelscape.com/rustic](https://steelscape.com/rustic)**







## PROJECT SPOTLIGHT:

### FIRESTONE VINEYARD

PASO ROBLES, CA

Designed for a third generation winemaker, this memorable tasting room serves to cement the families winemaking legacy. Exuding a Tuscan charm, this premium venue creates a rich, memorable experience for visitors to the area.

The warm oxidized glow of Steelscape's Sedona Rust was selected to provide a graceful roofline that contrasts with the light masonry siding yet perfectly suits the golden tones of the Central Coast wine region.

**Architect:** Vladimir Milosevic  
**Contractor:** Rarig Construction

For more information on this color, visit [steelscape.com/rustics](https://steelscape.com/rustics)







## PROJECT SPOTLIGHT:

# FIRESTATION 63

TACOMA, WA

The expansive Central Pierce Fire and Rescue Station is designed to house one fire engine and one paramedic unit including crew living and support areas. Finishes were selected and designed based on sustainability, durability and integration into a broader mill concept. Steelscape's Burnt Rust print in a corrugated profile was selected to add a warm, contrasting hue to other metal wall products while also integrating with wood accents.

**Architect:** RiceFregusMiller and TCA Architecture Planning  
**Contractor:** SCF General Contractors Inc.

For more information on Steelscape's Rustic design options, visit [steelscape.com/rustic](https://steelscape.com/rustic)







## PROJECT SPOTLIGHT:

### SKY RANCH MIDDLE SCHOOL

RENO, NV

Situated in the sparse desert highlands at the base of the Eastern Sierra, sits this charismatic middle school. For this project, metal siding was selected to add depth and unique appeal to this expansive campus. Metal was the preferred material for this facade due to its color versatility, long term durability, and the confidence provided by metal's lengthy finish warranties.

Pairing Steelscape's Sedona Rust and Vintage, these finishes provide rich accent pieces that also integrate effectively with the desert hues of the Reno area and the earth tones of the masonry siding. Much like the desert landscape, these colors provide evolving color as the light changes throughout the day. Applied to standing-seam siding of varying widths, the panel ribs provide varied texture to the facade and capitalize on dynamic shadows to further accentuate the siding color.

**Architect:** Van Woert Bigotti Architects

**Contractor:** Core Construction

**Photo Credit:** Vance Fox

**For more information and inspiration on the solid metal colors that Steelscape can create, visit [steelscape.com/solid-colors/](https://steelscape.com/solid-colors/)**







## PROJECT SPOTLIGHT:

### SPRUCE ELEMENTARY

LYNNWOOD, WA

This memorable project features a flexible and lively campus for its diverse community. The 81,000 sq ft school includes classrooms, a gymnasium, student support facilities, and music rooms. A key feature of the design is a central second-floor library, designed to act as a safe and inspiring haven for students.

The building features Steelscape's Burnt Rust finish, which provides a warm color that connects the building to the surrounding grove of mature trees. This finish, paired with the varied lines of a concealed fastener metal siding, add texture and shadow to the modern, functional design. Burnt Rust was the preferred finish for this project as it provides the fresh rust glow of a traditional oxidized product without any of the long-term maintenance issues, such as rust runoff or staining.

**Architect:** Bassetti Architects

**Installer:** King Sheet Metal

**For samples or more information on Steelscape's Burnt Rust visit [Steelscape.com/rustic](https://steelscape.com/rustic)**







## PROJECT SPOTLIGHT:

# PORT OF KALAMA INTERPRETIVE CENTER

KALAMA, WA

Positioned on the banks of the Columbia river, lies this captivating take on a traditional waterfront warehouse. The building provides an operations center for the port and a home for the region's rich history.

Steelscape worked collaboratively with the Port of Kalama to develop finishes ideal for their waterfront interpretive center. This re-imagined design features Steelscape's Burnt Rust and Weathered Zinc finishes. These colors recreate the warmth of fresh rust and the timeless metallic glow of aged zinc. The two colors complement other featured materials including stone and exposed metal, to create a harmonious design.

**Architect:** Collins Architectural Group

**For samples or more information on these colors, visit [steelscape.com](https://steelscape.com)**





# Solid Colors

Steelscape produces a kaleidoscope of vibrant metal colors ideal for metal roofing, siding, and other metal accessories. Steelscape supplies these metal colors direct to a broad network of leading metal product manufacturers.

Steelscape offers our robust paint system Spectrascape, in addition to a wide variety of other paints and finishes from leading paint vendors. Spectrascape colors offer a broad color palette, excellent durability, and long finish warranties.

## Sampling of Spectrascape Metal Roofing and Siding Colors



**There are representative colors only.** Inquire with your local metal roofing and siding manufacturer, or roofing contractor as to the colors available in your area.





## PROJECT SPOTLIGHT:

# SKOKOMISH COMMUNITY CENTER

SKOKOMISH, WA

Designed to provide a safe and welcoming environment to the Twana community, this distinctive net-zero structure incorporates a gathering space, commercial kitchen, education space and a gymnasium. The vibrant Colonial Red roof and trim contrasts with the wood siding to provide a captivating, staunch structure that integrates with its surrounding wooded environment. The skillion style roof facilitates the extensive use of solar while also enabling the crisp, clean lines of the standing roof to be on prominent display.

**Architect:** 7 Directions

**Builder:** Pease Construction and Rognlins Inc.

**For more information on Steelscape's Design and Color Solutions, visit [steelscape.com](https://steelscape.com)**







## Project Spotlight:

# Mcmenamins Kalama Harbor Lodge

KALAMA, WA

Opened in 2018, the Kalama Harbor Lodge expands the network of family-owned McMenamin brewpubs with this four-story, 30,000 sq. ft. hotel and restaurant. Nestled on the banks of the Columbia River, the lodge is modeled on the famous Pioneer Inn in Maui, a turn of the century, Lahaina building. This inspired design was chosen to complement McMenamins series of eclectic, captivating locations while also paying homage to one of the regions first settlers, John Kalama, originally from Maui.

Despite its historic appearance, this expansive hotel was built new from the ground up. The classic lines of the standing seam roof paired with a charismatic red hue, serve to provide a tasteful contrasting color to the lush surrounding environment while supporting the continuity of this historically influenced design.

**Architect:** Collins Architecture Group

**For more information on this color, visit [steelscape.com](https://steelscape.com)**





# PROJECT SPOTLIGHT:

## 410 URBAN INFILL

### CALGARY, AB

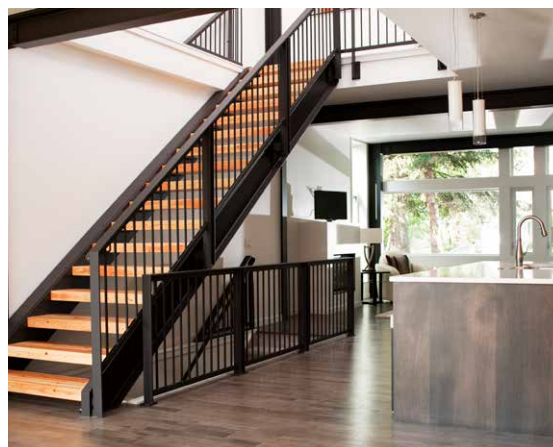
This 2,000 square foot modern residential home is designed to optimize living space for a family of four within the modest confines of inner suburban Calgary. Deploying a structural beam and post framed design, this home creates the feeling of space through an open-plan layout and high vaulted ceilings. Large windows on both floors accentuate the open, spacious feeling.

The extensive use of standing seam metal cladding in Steelscape's Slate Gray adds texture and distinct shadow lines while contributing to the modern aesthetic. This versatile color enables the unique integration between roof and siding surfaces. The muted hue also complements and accentuates the use of natural stained wood leading to a cohesive, memorable design.

**Architect:** Ryan Schmidt Architecture

**Builder:** Ironwood Building Corporation

For more inspiration visit [steelscape.com/solid-colors/](https://steelscape.com/solid-colors/)







## PROJECT SPOTLIGHT:

# ELK GROVE ANIMAL SHELTER

ELK GROVE, CA

Opened in October 2019, 7 years after it was originally envisioned, this shelter is designed to provide a warm atmosphere for 65 dogs, 55 cats, and other small animals. As the facility is heavily trafficked and requires frequent cleaning, metal was an obvious choice to reduce Operations & Maintenance budget impacts.

Genuine Steelscape steel was chosen for metal siding, roofing, and soffits to add visual interest, durability and for cost-effectiveness from both an environmental and capital cost perspective. To help convey the warm, fun, and inviting atmosphere, a bright custom yellow “Tuscan Sun” was chosen by a public forum. This was used in conjunction with contrasting Zinc Gray siding and roofing. This bright, modern color scheme blends well with the mixed-use of wood and brick to create a dramatic, contemporary design.

**Architect:** Eric Whole and Carolyn Natividad, LDA Partners

**General Contractor:** Robert E Boyer, Inc.

**For more inspiration visit [steelscape.com/solid-colors/](https://steelscape.com/solid-colors/)**







## PROJECT SPOTLIGHT:

### 'BLACK MAGIC'

### PRIVATE RESIDENCE

ASPEN, CO

Nestled in the picturesque mountainside close to Aspen, Colorado, sits this stunning, modern single-family home. Appropriately called 'Black Magic', the home features an open floorplan and large windows of varying sizes to maximize the breathtaking views of this unique location.

Seeking to make a bold statement from its heavily wooded lot and earthy surroundings, the home features the extensive use of metal cladding in a dark solid hue. Corrugated metal wall panels add texture and visual appeal to the large squared surfaces, while also providing strength and resistance against the harsh Colorado winters. The use of similarly colored flush panels for accent pieces, add additional visual distinction to the structure.

**Contractor:** Rowland+Broughton Design Build

**For more information and inspiration on the solid metal colors that Steelscape can create, visit [steelscape.com/solid-colors/](https://steelscape.com/solid-colors/)**





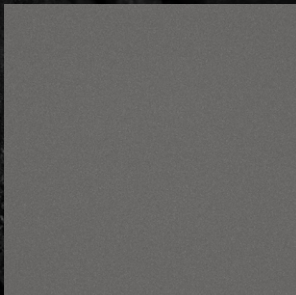
# Natural Matte®

## Ultra Low Gloss Metal Roofing & Siding Colors

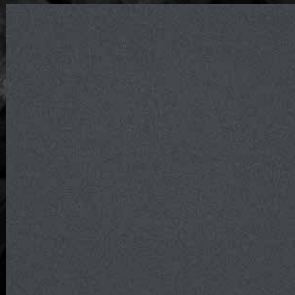
Steelscape offers our robust paint system Spectrascape, in addition to a wide variety of other paints and finishes from leading paint vendors. Spectrascape colors offer a broad color palette, excellent durability, and long finish warranties.

Subtle. Refined. Revolutionary.

Natural Matte® is the ultimate low-gloss metal finish to elevate building exteriors.



Shale  
SRI 44 | 22823



Basalt  
SRI 28 | 22824



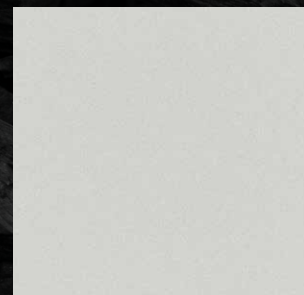
Graphite  
SRI 29 | 22825



Carbon  
SRI 25 | 22826



Ore  
SRI 28 | 22827



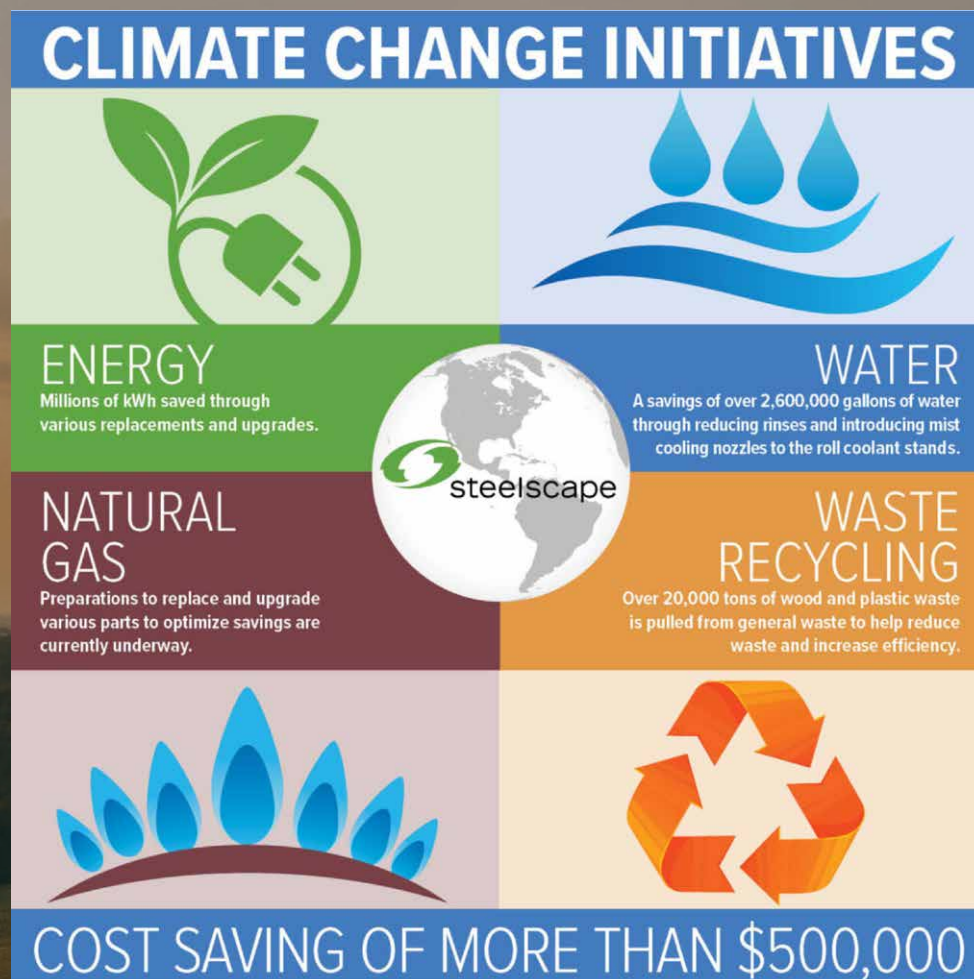
Frost  
SRI 87 | 22828



# Climate Change Initiatives

We work hard to find ways to increase awareness and decrease waste.

Recycling and reduction efforts translated to a cost savings of more than \$500,000; not to mention the environmental impact. This included reusing and recycling pallets, preventing food waste at site canteens going to landfill, and reducing hazardous waste.





# STEELSCAPE DESIGN STUDIO

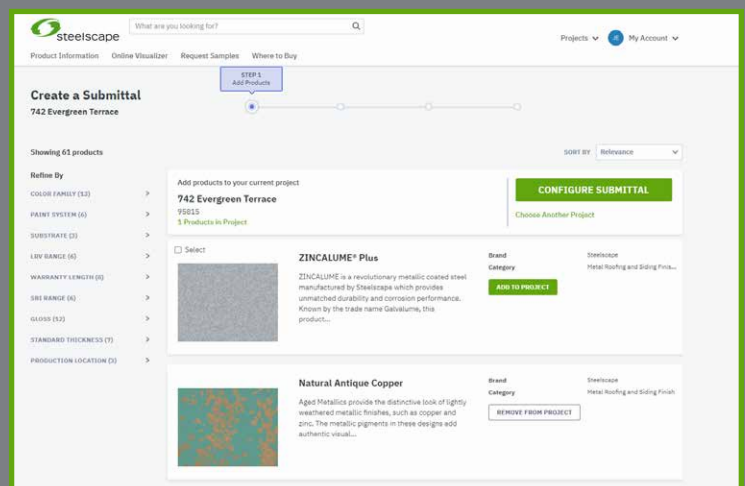
## Create Submittal Packages in Minutes

Explore Steelscape's metal colors and finishes, design tools, technical resources, specification guides and more.

Create a Submittal Package in 4 Easy Steps....

1. Select Products
2. Select Documents
3. Edit Project Details
4. Download Submittal Package

- BIM, CAD & Revit Models
- Project Management
- Submittal Generation
- Technical, Testing & Sustainability Documents







For more product information or samples:

888-553-5521

[steelscape.com](http://steelscape.com)

[productinfo@steelscape.com](mailto:productinfo@steelscape.com)

